

Secure-Trac[®]

Internal Roller Cantilever Slide Gates



Merchants Metals[®]
the first name in fence solutions

Internal Roller Cantilever Slide Gates

Secure-Trac® Cantilever Slide Gates combine the highest quality materials and workmanship to ensure long lasting durability. The use of high alloy aluminum results in superior strength with reduced weight compared to other gates and the enclosed roller system eliminates the safety issues associated with external rollers.

An all welded construction ensures a rigid assembly. The easy opening full cantilever design works well with electric operator systems. The enclosed roller system eliminates safety issues associated with external rollers and is virtually unaffected by ice, snow, and dirt. In addition, the premium one-piece track design creates added strength and rigidity, as opposed to gates with “bolt-on” tracks.

For optimum frame rigidity, each interior panel is equipped with four welded gussets and a pair of stainless steel adjustable Air Craft cables. This added support is standard on both ornamental and chain link gates.





Secure-Trac® Features

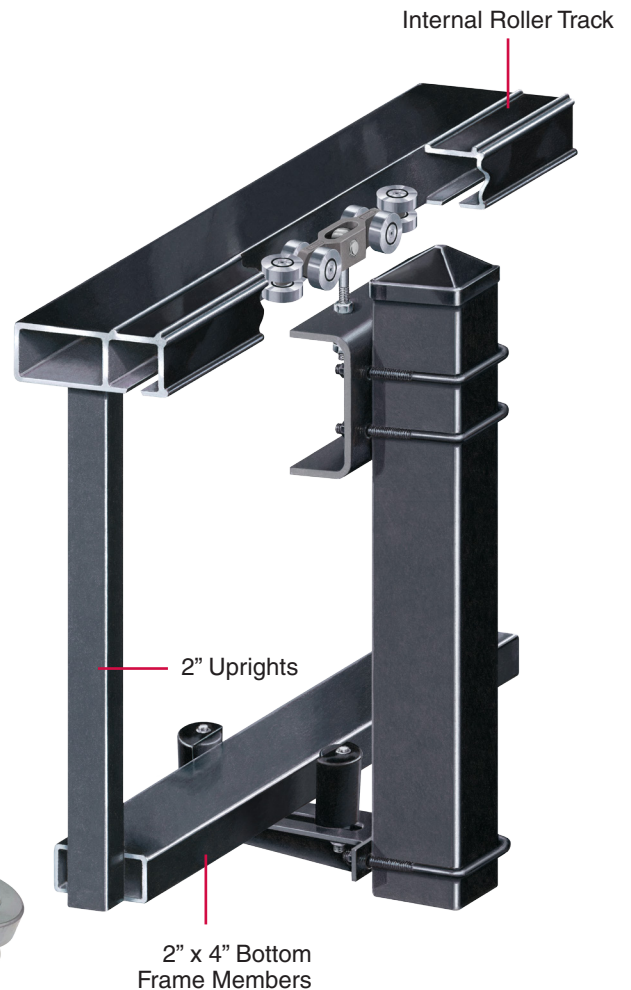
- Fully Welded Construction
- Enclosed Roller System
- 6005-T6 Aluminum Alloy Construction
- 3 Year Limited Warranty
- Manual or Mechanically Operated
- Welded Gussets
- Stainless Steel Aircraft Cable with Turn Buckle
- Powder Coating (additional charge)

Premium Rigid Frame Construction

Internal Roller Track: The backbone of our Secure-Trac® gate, the internal roller track, is a one piece extrusion consisting of the track and a 2"X 4" rectangular support frame member. This one piece design is welded as part of the gate frame, adding needed strength and rigidity, as opposed to gates with "bolt-on" tracks.

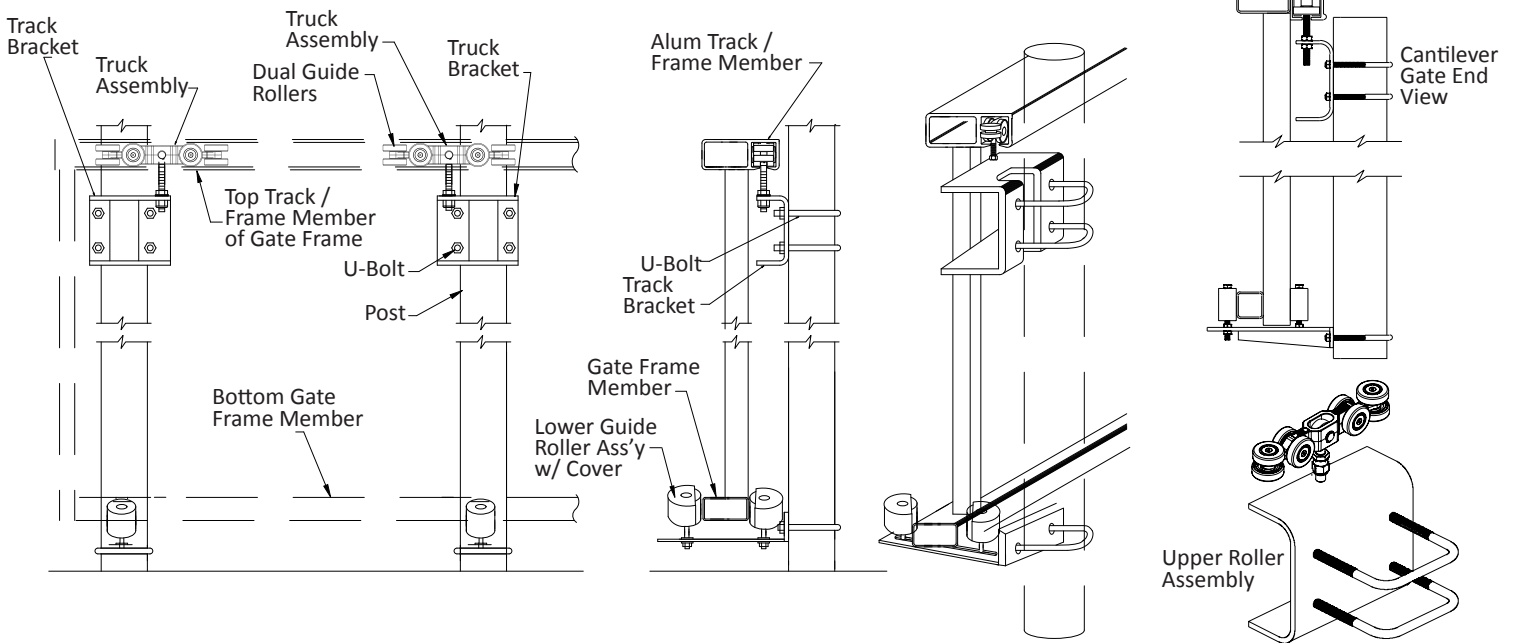
Uprights: The upright members, which are 2" square, are welded to the 2"x4" rectangular support. The uprights are evenly spaced along the length of the gate frame and are never more than 8'0" apart.

Bottom Frame Members: The bottom member of the gate frame is a 2" x 4" rectangular tube which is welded to the 2" upright members, forming a rigid one piece frame and track.

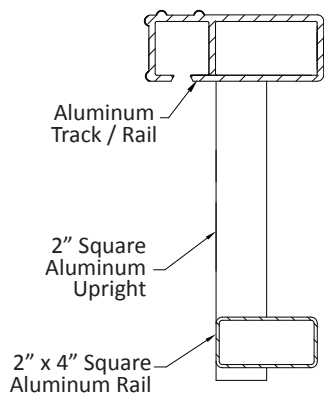


Secure-Trac® Gate Size Adjustments

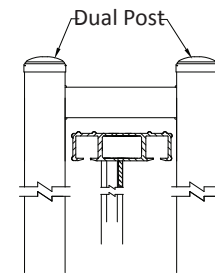
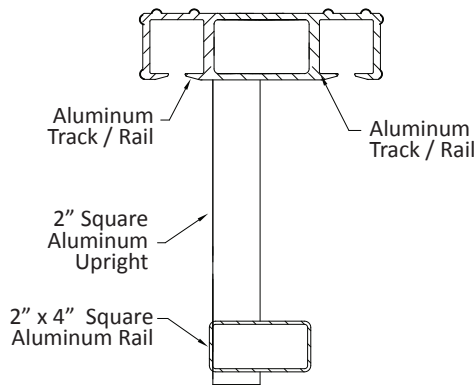
Secure-Trac® gates can be built to accommodate a wide range of openings. Single gates accommodate 10' – 40' openings and double gates accommodate 20' – 80' openings. (Any single chain link gate more than 30' wide or any ornamental gate more than 25' wide will have two internal tracks.)



Single Track Gate Profile



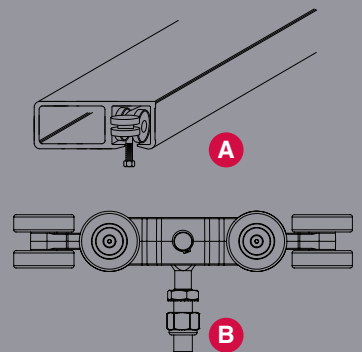
Double Track Gate Profile



Top Roller Assembly

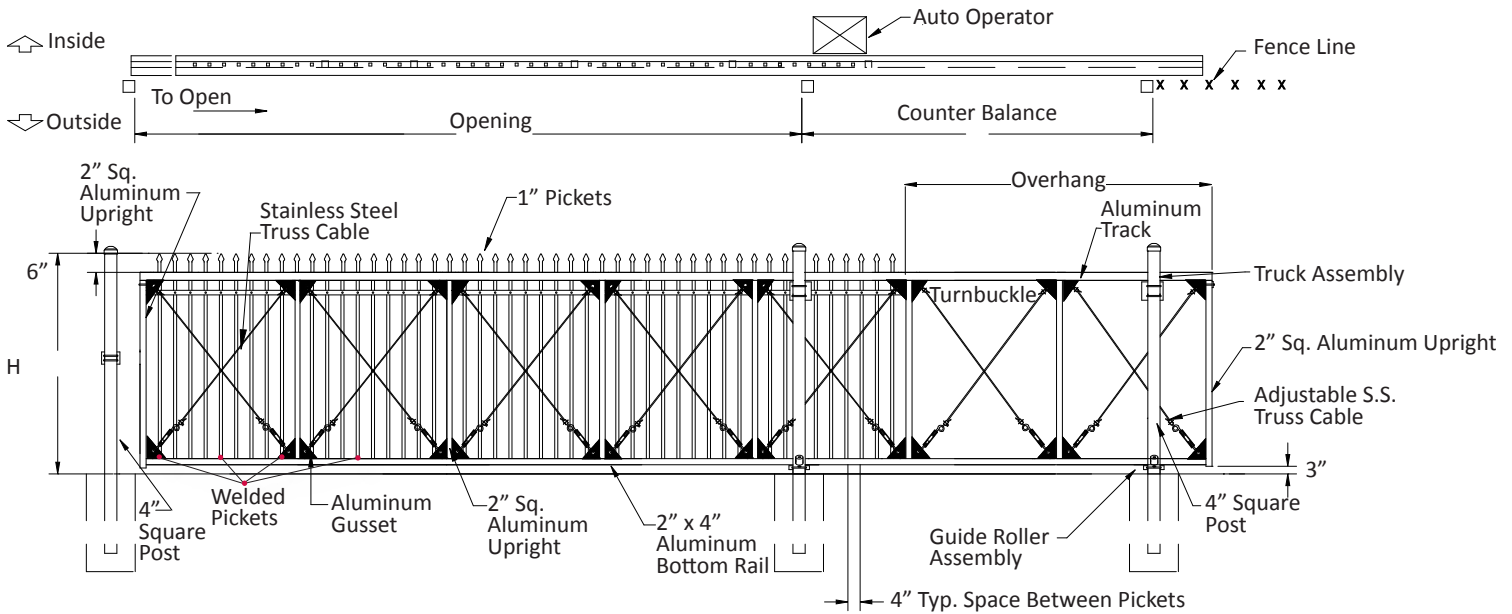
Inside the track channel is a truck assembly. Both the track and the truck assembly are designed to withstand a reaction load in excess of 2,000 lbs. The truck bracket assembly is lubricated prior to production to enhance performance and endurance. (Fig. A)

The Secure-Trac® truck assembly has a swivel bolt that allows rotation in all directions allowing it to swivel up or down, as well as side to side, to accommodate the movement of the gate frame. This assures even wear of the wheels and less wear and tear on the gate and the electric operators. (Fig. B)



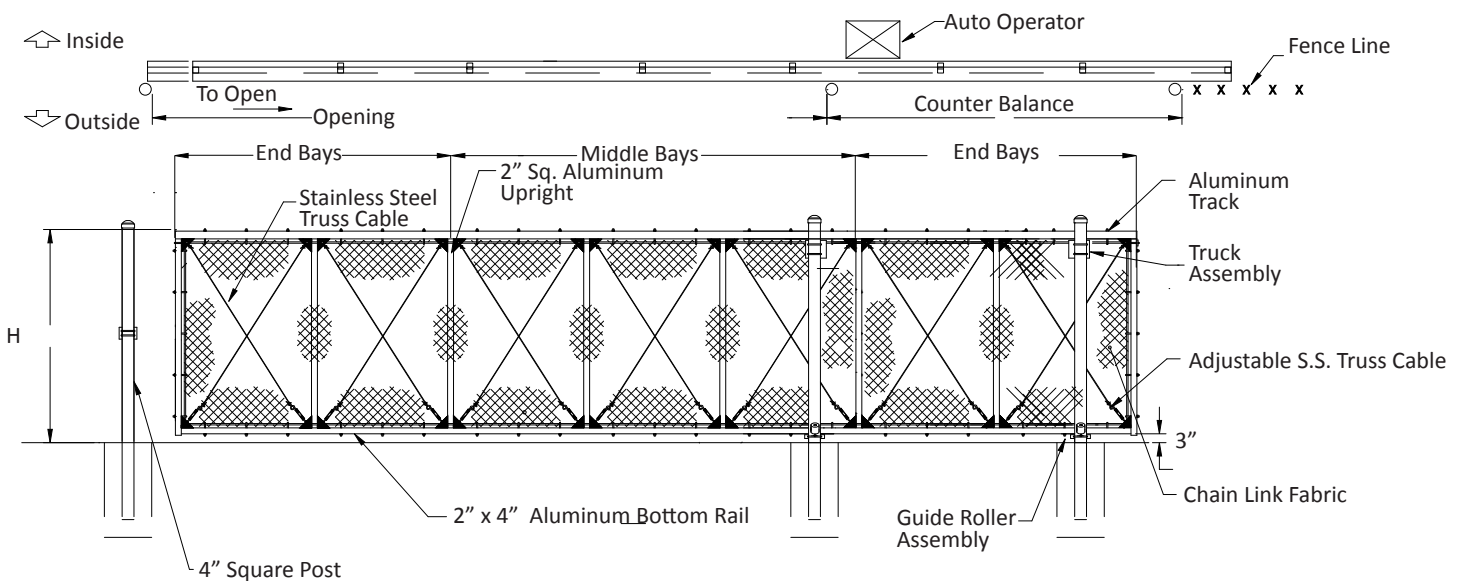
Secure-Trac® Ornamental Picket Gates

With ornamental picket gates (pointed picket style shown above), all pickets are welded between upper and lower frame members, increasing support and rigidity to the overall gate frame. Gates over 25' and wider will have a double track.



Secure-Trac® Chain Link Gates

With chain link Secure-Trac gates®, the chain link fabric is factory installed. We stretch the fabric in four directions so that each strand of wire acts as a truss increasing support to the frame. Some manufacturers only stretch their fabric in one direction ultimately working against the frame by merely adding weight. Gates over 30' and wider will have a double track.



Additional Fence Solutions

Merchants Metals is one of the largest manufacturers and distributors of fence systems in the nation. Our complete line of fencing solutions for residential, commercial and industrial applications includes:

- Hot-Dipped Galvanized Chain Link
- Color Coated Chain Link
- Steel Ornamental in both Component and Fully-Welded Systems
- Aluminum Ornamental Systems
- Wood Fence
- PVC Fence
- Temporary Fence
- Aluminum Track Gates
- Access Control Products
- Guardrail
- Pre-hung Security Gates
- Welded Wire

All Merchants Metals products are available through professional fence contractors nationwide.

To find out more about Merchants Metals and the fencing solutions we offer, please call 866.888.5611 or visit www.merchantsmetals.com.



 Manufacturing Facility
 Service Center
 Corporate Office



AIA Continuing Education



ORNAMENTAL



PVC



CHAIN LINK



WOOD



GATES



866.888.5611

www.merchantsmetals.com