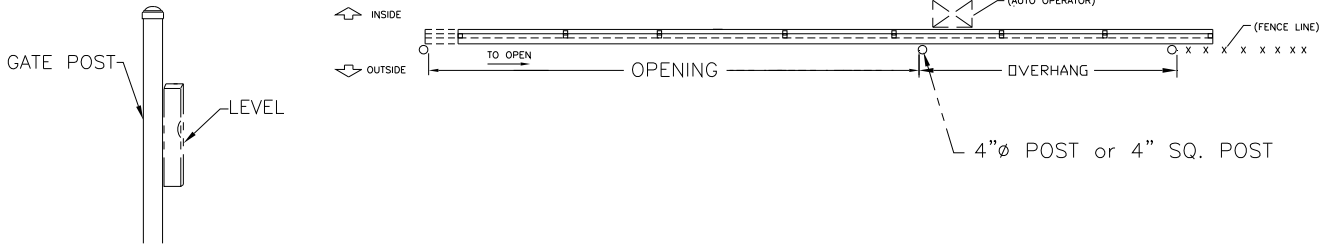


# Hanging a Merchants Metals “Secure-Trac<sup>®</sup>” Internal Roller Cantilever Slide Gate



**STEP 1**

Set post per chart-1a. It is important that all posts be set plumb and in a straight line. This will assure that your gate will operate correctly.



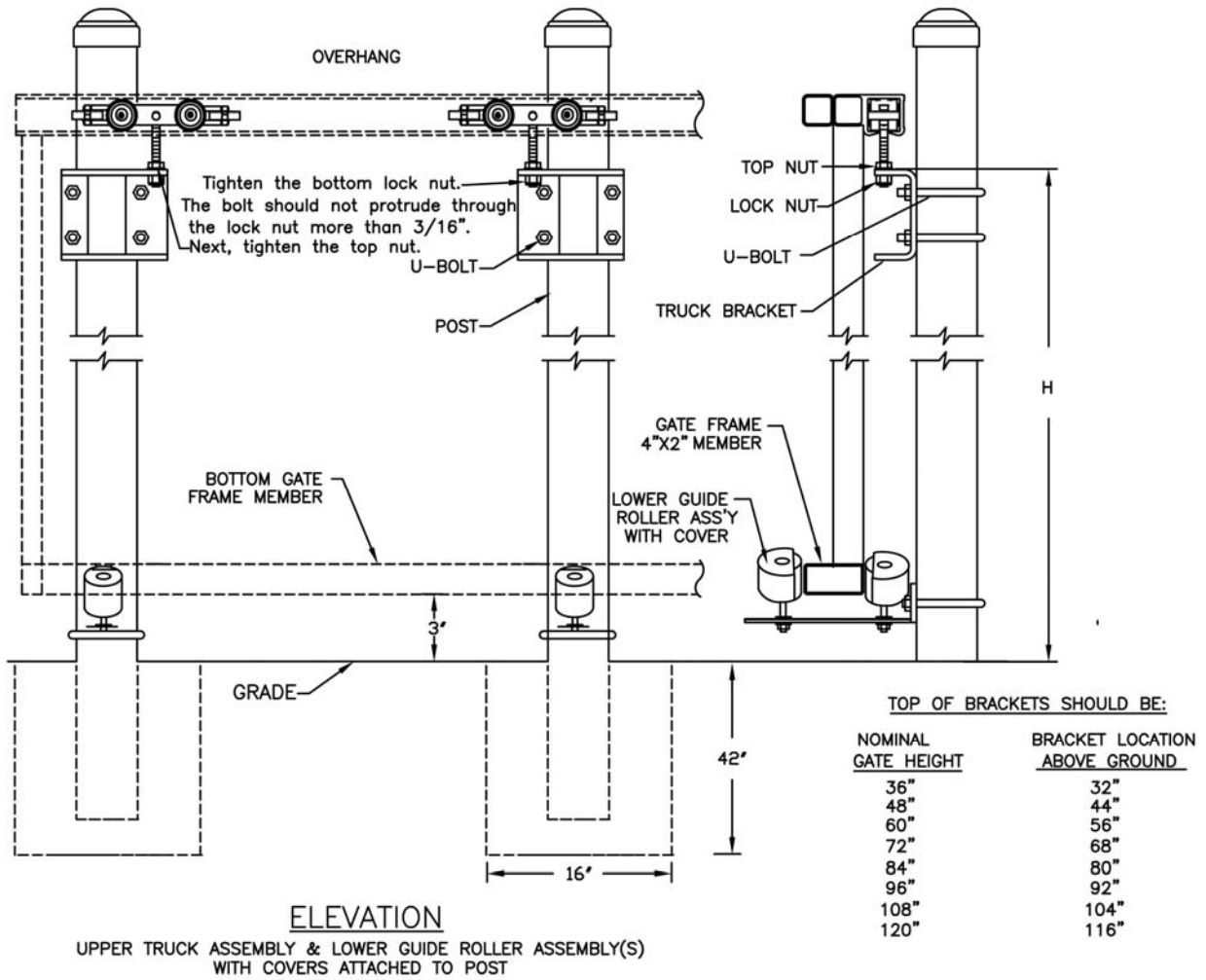
**Chart 1a**

<b>Standard Opening</b>			<b>Standard Support Overhang</b>
10'0" (3048 mm)			6'6" (1981 mm)
11'0" (3354 mm)	through	14'0" (4267mm)	7'6" (2286 mm)
15'0" (4572 mm)	through	22'0" (6706 mm)	10'0" (3048 mm)
23'0" (7010 mm)	through	30'0" (9144 mm)	12'0" (3657 mm)
31'0" (9449 mm)	through	40'0" (12192 mm)	16'0" (4876 mm)

**STEP II**

Attach truck brackets to post.  
 Make sure that all brackets are level.  
 Tighten nuts on "U" Bolts.  
 When using round posts, make sure that the brackets are in line with the gate.

See chart below for location of brackets.



**STEP III**

**LIFT AND SLIDE GATE INTO ROLLERS>**

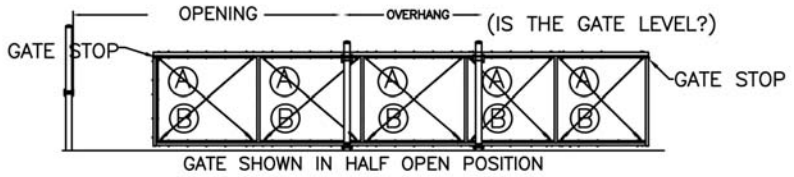
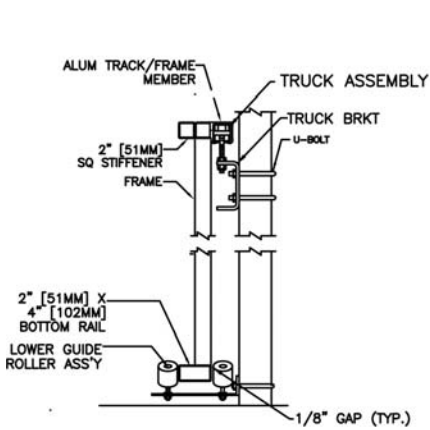
Manually push gate back and forth on rollers. A gate up to 30' opening should roll with ease. If this is not the case, check alignment to correct. The truck assembly bolt should not be rubbing on the track. If it does, something is out of alignment. Again, check alignment.

Also, make sure that the gate does not rub on the ground. Uneven ground may require raising the gate.

**STEP IV**

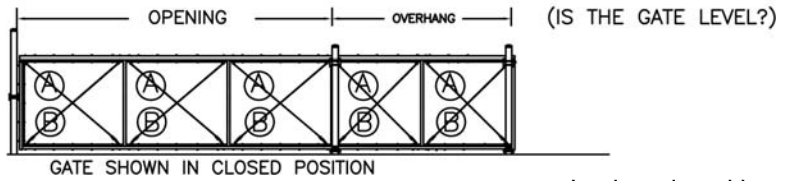
During shipment some of the truss cables may become loose. Adjustment must be made in this order.

Place the gate into half open & half closed positions as shown below:



When gate is in this half open position, all cables should be similar in tightness.

Next: Close gate fully.



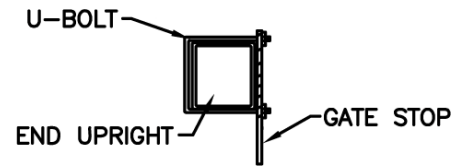
In closed position  
All "B" Cables should be taut.  
All "A" Cables should be Stack.

**STEP V**

Install bottom guide rollers. Adjust wheels so that the gate is not leaning on the wheels.

**STEP VI**

Install Gate Stop Bracket on first and last upright of the gate. These should STRIKE THE TOP TRUCK BRACKET.



**STEP VII**

Install Gate Latch or Keeper to Latch Post.

**STAND BACK AND ADMIRE YOUR WORK.**

Manufacturer:



Phone: (866) 888-5611

Fax: (281) 372-3801

Specification Department

Phone: (888) 260-1600 Fax: (888) 261-3600

tech-info@merchantsmetals.com