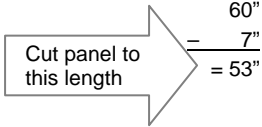
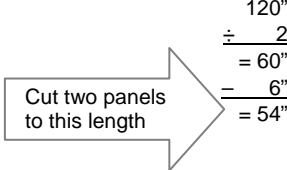


STATESMAN® RESIDENTIAL GATE END KIT

IMPORTANT: READ ALL INSTRUCTIONS BEFORE SETTING THE GATE POSTS

1. A variety of gate leaf sizes can be built by setting the posts in accordance with Tables 1 and 2, shown on page 3.
2. The inside post to inside post measurement **MUST** fall within the min/max openings listed in Tables 1 and 2 or the pickets will interfere with the gate assembly.
3. To calculate the actual gate panel length, see the following formulas and examples:

	SINGLE-SWING GATE	DOUBLE-DRIVE GATE
FORMULA	$\begin{array}{r} \text{Measurement Between Posts} \\ \text{(inside to inside)} \\ - \quad 7''^* \\ \hline = \text{Panel Length to be Cut} \end{array}$	$\begin{array}{r} \text{Measurement Between Posts} \\ \text{(inside to inside)} \\ \div \quad 2 \\ \hline = \frac{1}{2} \text{ Gate Opening} \\ - \quad 6'' \\ \hline = \text{Panel Length to be Cut} \end{array}$
EXAMPLE	 $\begin{array}{r} 60'' \\ - \quad 7'' \\ \hline = 53'' \end{array}$	 $\begin{array}{r} 120'' \\ \div \quad 2 \\ \hline = 60'' \\ - \quad 6'' \\ \hline = 54'' \end{array}$

* 7" = Hardware allowance plus 1 1/2" X 2" for gate ends

Note: Two fence sections must be cut to build a double drive gate.

4. Before cutting the panel, verify that the distance from the outer face of the last picket to the end of the rail is the same on both ends. Cut the panel accordingly. To ensure a nice appearance, make sure the cuts are square.
5. Insert the panel rails over the rail end supports inside the bolt guide tabs on all four corners of the panel. Make sure the rails slide flush to the gate upright, and the panel is square with the gate end.

OPTIONAL—If fabricating a three-rail gate leaf from a two-rail gate end, mark and secure Universal Brackets on the insides of the uprights where the rail makes contact and cut the third rail 1/8" shorter on each end than the top and bottom rails. Then, attach to the rail with the Universal Bracket supplied hardware (see Diagram 1).

6. Using the predrilled holes in the tabs as a guide, drill holes through one side of rail with an 11/32" metal bit. Once through the first side of the rail, the predrilled hole on the opposite side of the rail support can be felt. Place the bit in the opposite hole, and drill through the other side of the rail.
7. For best results, drill ONE hole in each corner of the gate first, insert carriage bolt with nut and tighten. Verify that gate frame is square by measuring the diagonals and repeat drilling process on the remaining holes of the rail end supports. If the finished gate leaf is over 5' wide, a truss support is recommended.

DIAGRAM 1

Using the Universal Bracket (part # 70472BK) as an Attachment Point for a Third Rail (mid-rail) to Gate End

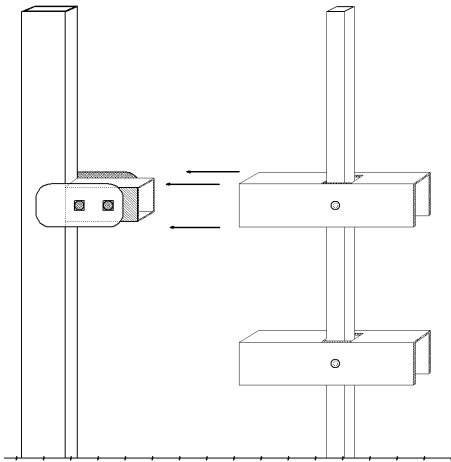


Figure 1: Position gate end on panel

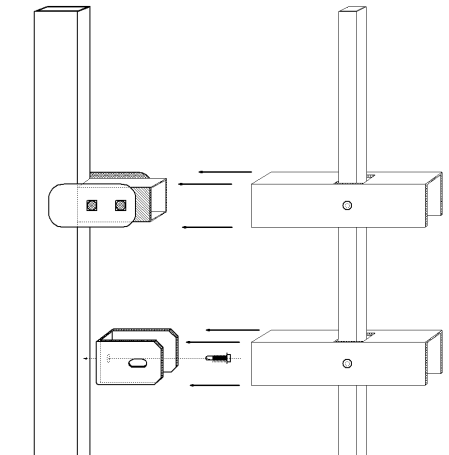


Figure 2: Use mid-rail as a guide for the bracket

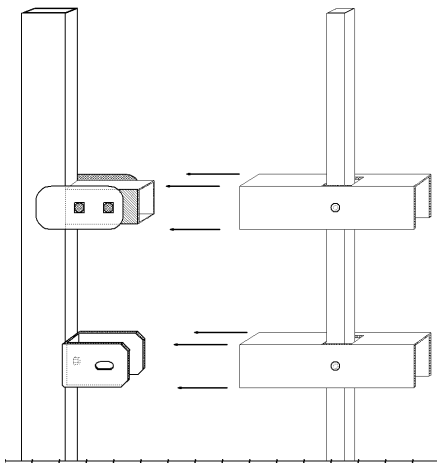


Figure 3: Attach bracket with supplied tek-screw

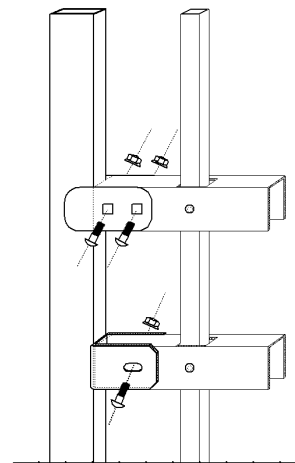


Figure 4: Refer to steps 6 & 7 of the instructions for rail mounting instructions

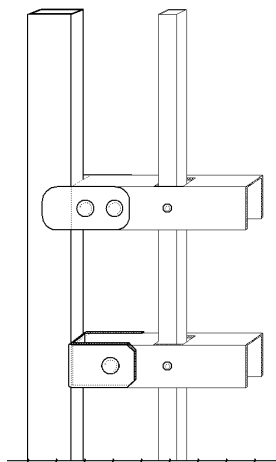


Figure 5: Finished 3-rail gate end

SINGLE-SWING GATE

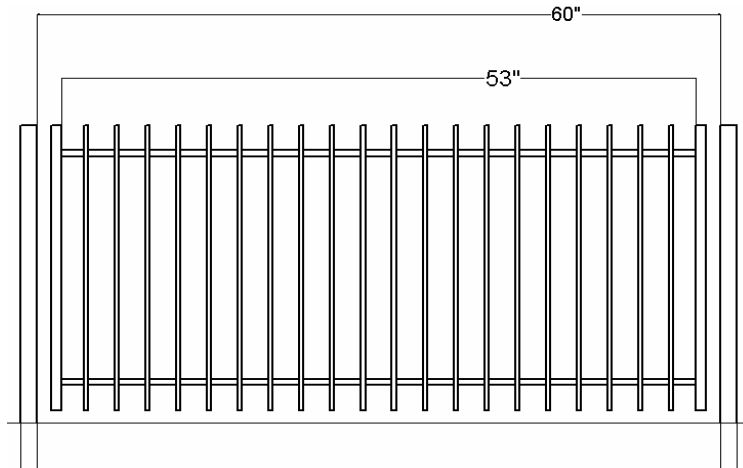


TABLE 1-SINGLE-SWING GATE					
Set posts by measuring inside to inside					
3/4" PICKETS			5/8" PICKETS		
Maximum Gate Opening		Minimum Gate Opening	Maximum Gate Opening		Maximum Gate Opening
92	-	91	93	-	91
88	-	86	88	-	86
83	-	82	83	-	82
79	-	77	79	-	76
74	-	73	74	-	72
70	-	68	70	-	67
65	-	63	65	-	63
61	-	59	61	-	59
56	-	54	56	-	54
51	-	50	52	-	50
47	-	45	47	-	45
42	-	41	42	-	40
38	-	36	38	-	36
33	-	31	33	-	31
29	-	27	29	-	27
24	-	22	24	-	22
19	-	18	20	-	18

DOUBLE-DRIVE GATE

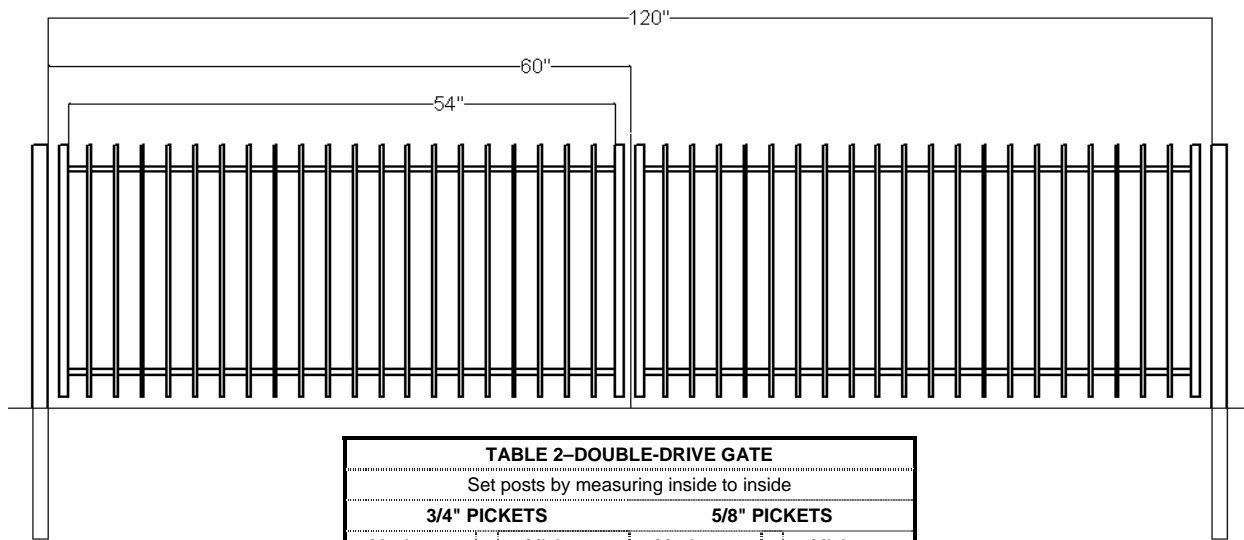


TABLE 2-DOUBLE-DRIVE GATE					
Set posts by measuring inside to inside					
3/4" PICKETS			5/8" PICKETS		
Maximum Gate Opening		Minimum Gate Opening	Maximum Gate Opening		Minimum Gate Opening
182	-	182	184	-	180
174	-	172	174	-	170
164	-	164	164	-	162
156	-	154	156	-	150
146	-	146	146	-	142
138	-	136	138	-	132
128	-	126	128	-	124
120	-	118	120	-	116
110	-	108	110	-	106
100	-	100	102	-	98
92	-	90	92	-	88
82	-	82	82	-	78
74	-	72	74	-	70
64	-	62	64	-	60
56	-	54	56	-	52
46	-	44	46	-	42
36	-	36	38	-	34