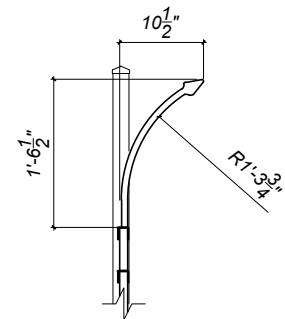


- NOTES:
1. SPECIFICATIONS SHOWN CAN BE CHANGED BY THE MANUFACTURER ONLY.
 2. ALL COMPONENTS OF THE GATE TO BE COATED BLACK.
 3. VERIFY POST DEPTH AND FOOTING DIMENSIONS WITH LOCAL CODES AND SITE CONDITIONS.
 4. CUSTOM DIMENSIONS ARE AVAILABLE UPON REQUEST.
 5. OUTSIDE LOOKING IN, GATE LATCHES IN THE MIDDLE
 6. GATE OPENINGS OVER 16' WILL REQUIRE ADDITIONAL SUPPORT
 7. POST SIZE WILL VARY DEPENDING UPON WIDTH AND HEIGHT OF GATE

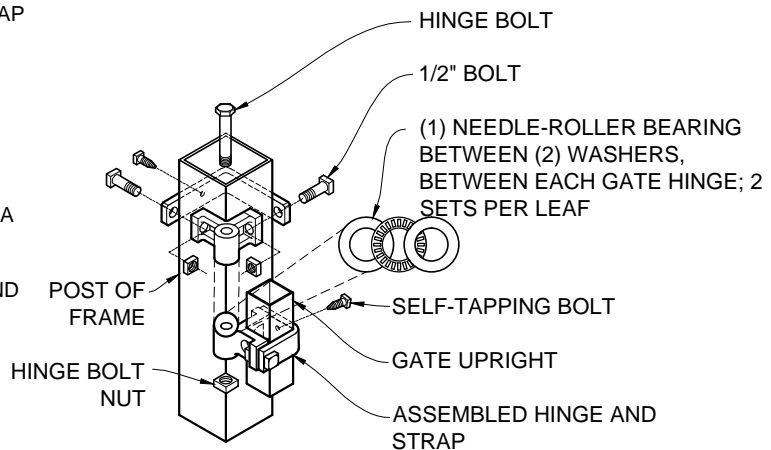
POST DEPTH CHART*	
HEIGHT OF GATE	POST BELOW GRADE
5' OR LESS	2'
6' OR MORE	3'

* SEE NOTE 3 TO VERIFY

ARCH CHART	
WIDTH OF OPENING	HEIGHT OF ARCH
10'-14'	12"
14' AND UP	12" or 15"



**CURVED TOP PICKET
DETAIL 1/2"=1'-0"**



**PRESSED STEEL SQUARE HINGE
DETAIL - NOT TO SCALE**

COPYRIGHT © MERCHANTS METALS
ALL RIGHTS RESERVED

Merchants Metals
the first name in fence solutions

**GUARDSMAN GATE - CURVE TOP
DOUBLE DRIVE COMPOUND ARCH 3 TO 4 RAILS**

10' TO 40' WIDE OPENING x 6' TO 12' HIGH
(Nom.Dimension)

BY: J.R.
DATE: 16 SEPT 13
REV: D.D.

DWG. NO.
GM CA IND CT 5-20W x6-12H DD
SCALE:
AS NOTED