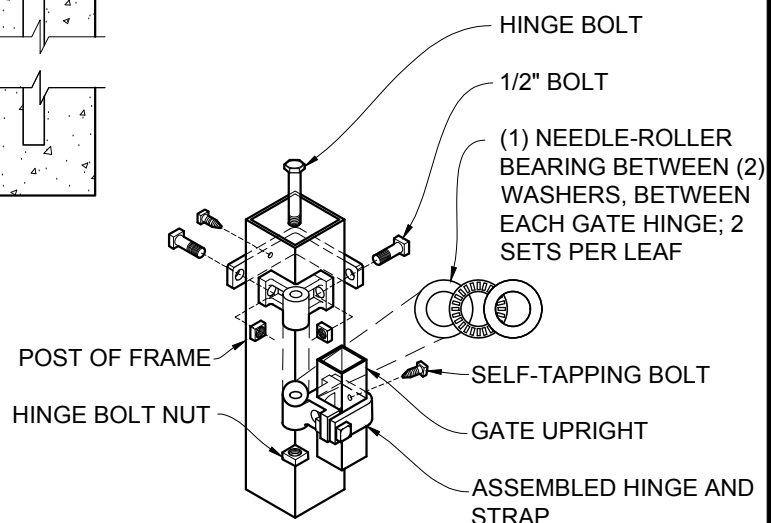


GUARDSMAN GATE - MONROE
ELEVATION - OUTSIDE LOOKING IN 1/2"=1'-0"

- 2" PRESSED STEEL SQ CAP
- 1-3/8" X 1-1/2" 11 GA U-CHANNEL RAIL
- INDUSTRIAL DRIVE RIVET
- ALUMINUM RING INSTALLED w/ INDUSTRIAL DRIVE RIVET
- 3/4" SQ. PICKET - 16GA OR 18GA
- POST w/ PRESSED STEEL SQUARE CAP - SEE NOTE 7
- 1/4" Ø STAINLESS STEEL AIRCRAFT CABLE w/ COMPRESSION SLEEVE AND THIMBLE. INSTALLED w/ 5/16 Ø EYEBOLT



PRESSED STEEL SQUARE HINGE
DETAIL - NOT TO SCALE

- NOTES:
1. SPECIFICATIONS SHOWN CAN BE CHANGED BY THE MANUFACTURER ONLY.
 2. ALL COMPONENTS OF THE GATE TO BE COATED BLACK.
 3. VERIFY POST DEPTH AND FOOTING DIMENSIONS WITH LOCAL CODES AND SITE CONDITIONS.
 4. CUSTOM DIMENSIONS ARE AVAILABLE UPON REQUEST. FOR HIGHER CUSTOM GATES PLEASE CONTACT THE STATESVILLE PLANT.
 5. OUTSIDE LOOKING IN, GATE LATCHES IN THE MIDDLE.
 6. FOR LARGER CUSTOM GATES, PLEASE CONTACT THE STATESVILLE PLANT. GATE OPENINGS OVER 16' WILL REQUIRE ADDITIONAL SUPPORT.
 7. POST SIZE WILL VARY DEPENDING UPON WIDTH AND HEIGHT OF GATE

ARCH CHART	
WIDTH OF OPENING	HEIGHT OF ARCH
8'	12"
8'-10'	15"
10' - 28'	15" - 24"

POST DEPTH CHART*	
HEIGHT OF GATE	POST BELOW GRADE
5' OR LESS	2'
6' OR MORE	3'

* SEE NOTE 3 TO VERIFY



GUARDSMAN GATE - MONROE
DOUBLE DRIVE SIMPLE ARCH 2 TO 4 RAILS
8' TO 28' WIDE OPENING x 3' TO 8' HIGH
(Nom.Dimension)

BY: J.R.
DATE: 28 OCT 20
REV: D.C.

DWG. NO.
GM SA COM MO 8-28W x 3-8H DD
SCALE:
AS NOTED