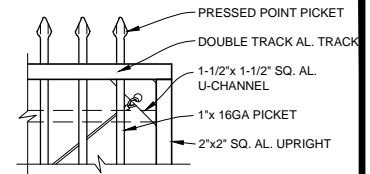
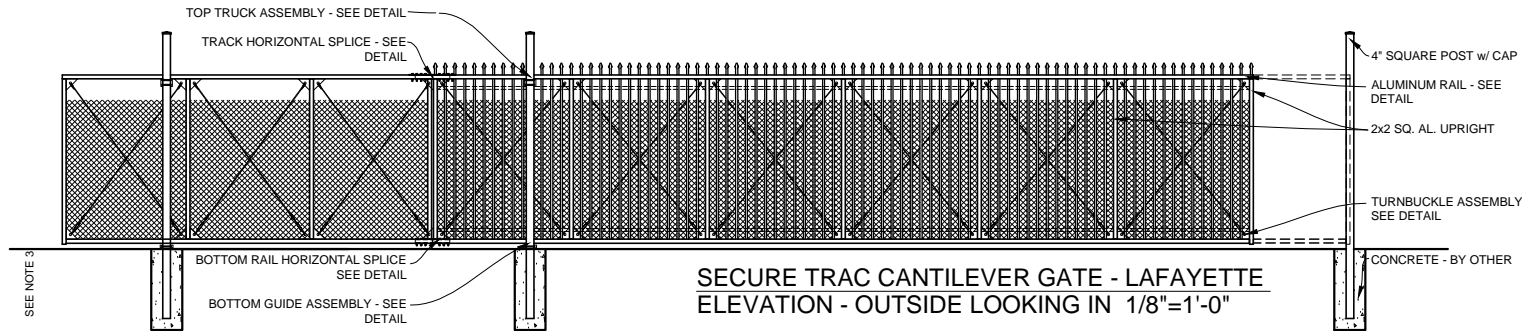


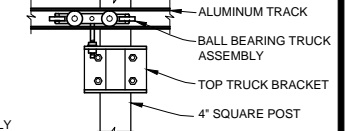
SECURE TRAC CANTILEVER GATE - LAFAYETTE
PLAN 1/8"=1'-0"



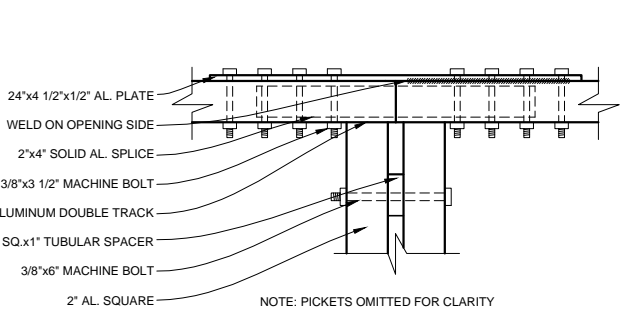
RAIL
DETAIL 1/2"=1'-0"



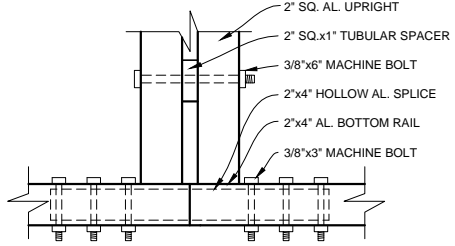
SECURE TRAC CANTILEVER GATE - LAFAYETTE
ELEVATION - OUTSIDE LOOKING IN 1/8"=1'-0"



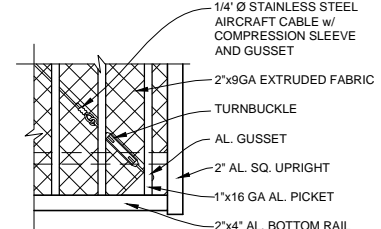
TOP TRUCK ASSEMBLY
DETAIL 1/2"=1'-0"



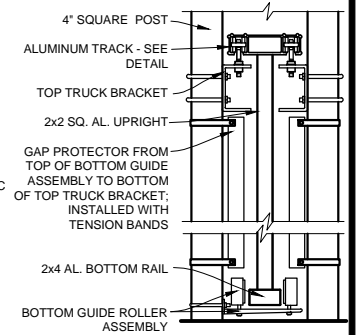
NOTE: PICKETS OMITTED FOR CLARITY
TRACK HORIZONTAL SPLICE
DETAIL 1"=1'-0"



NOTE: PICKETS & FABRIC OMITTED FOR CLARITY
BOTTOM RAIL HORIZONTAL SPLICE
DETAIL 1"=1'-0"



TURNBUCKLE ASSEMBLY
DETAIL 1/2"=1'-0"



BOTTOM GUIDE ASSEMBLY
DETAIL 1/2"=1'-0"

NOTES:

1. SPECIFICATIONS SHOWN CAN BE CHANGED BY THE MANUFACTURER ONLY.
2. ALL COMPONENTS OF THE GATE TO BE COATED BLACK. OTHER COLORS AVAILABLE.
3. VERIFY POST DEPTH AND FOOTING DIMENSIONS WITH LOCAL CODES AND SITE CONDITIONS.
4. CUSTOM DIMENSIONS ARE AVAILABLE UPON REQUEST.
5. OUTSIDE LOOKING IN, GATE LATCHES ON _____ (RIGHT AS SHOWN).
6. GATE OPENINGS OVER 40' WILL REQUIRE ADDITIONAL SUPPORT.
7. OPENINGS OVER 30' REQUIRE A FIELD SPLICE AND DOUBLE TRACK (AS SHOWN). GATE OPENINGS 30' OR LESS DO NOT REQUIRE A FIELD SPLICE AND ONLY REQUIRE A SINGLE ALUMINUM TRACK AND 2 SUPPORT POSTS.

OPENING INSIDE FACE OF POST TO INSIDE FACE OF POST	COUNTERBALANCE OUTSIDE FACE OF POST TO OUTSIDE FACE OF POST
10'-0"	6'-6"
11'-0" - 14'-0"	7'-6"
15'-0" - 22'-0"	10'-0"
23'-0" - 30'-0"	12'-0"
31'-0" - 40'-0"	16'-0"
41'-0" - 50'-0"	25'-0"

ADD 4" TO COUNTER BALANCE AND OPENING FOR OVERALL LENGTH OF GATE.



COPYRIGHT © MERCHANTS METALS
 ALL RIGHTS RESERVED

Merchants Metals
the first name in fence solutions

SECURE TRAC CANTILEVER SLIDE GATE
LAFAYETTE - 2 - 4 RAILS

10' TO 50' WIDE OPENING x 6' TO 8' HIGH
 (Nom.Dimension)

BY: J.R.
 DATE: 20 SEPT 13
 REV: D.D

DWG. NO.
 SWP.LF.STC
 SCALE:
 AS NOTED