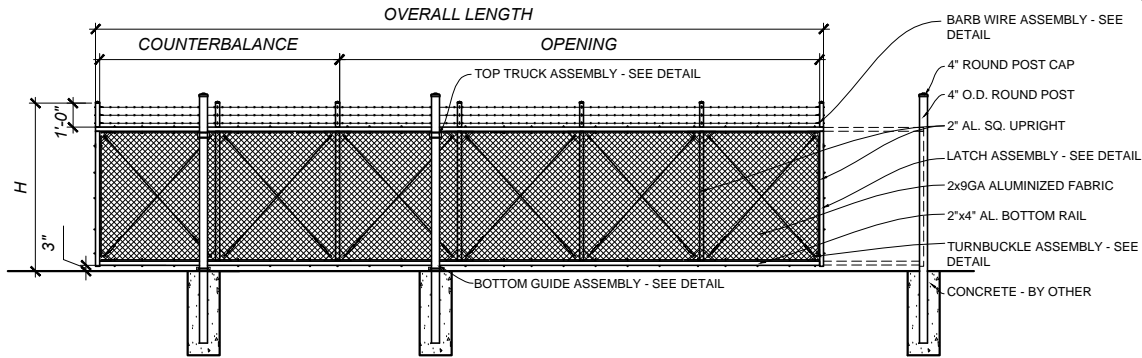
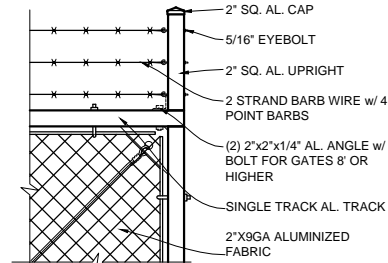


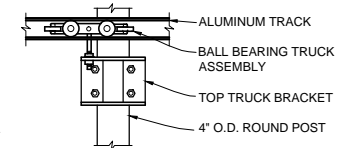
**SECURE TRAC CANTILEVER SLIDE GATE  
PLAN 1/8"=1'-0"**



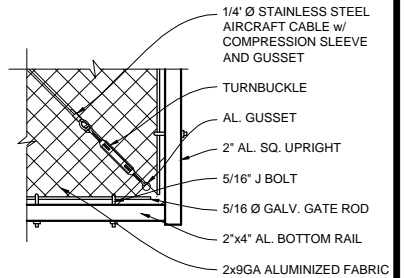
**SECURE TRAC CANTILEVER SLIDE GATE  
ELEVATION - OUTSIDE LOOKING IN 1/8"=1'-0"**



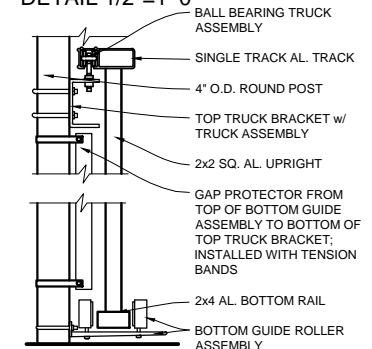
**BARB WIRE ASSEMBLY  
DETAIL 1/2"=1'-0"**



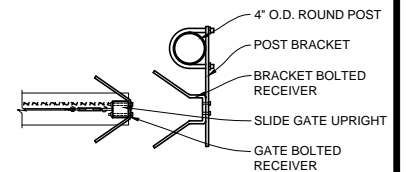
**TOP TRUCK ASSEMBLY  
DETAIL 1/2"=1'-0"**



**TURNBUCKLE ASSEMBLY  
DETAIL 1/2"=1'-0"**



**BOTTOM GUIDE ASSEMBLY  
DETAIL 1/2"=1'-0"**



**LATCH ASSEMBLY  
PLAN DETAIL 1/2"=1'-0"**

OPENING	OVERALL LENGTH	COUNTERBALANCE
INSIDE FACE OF POST TO INSIDE FACE OF POST	OUTSIDE OF FRAME TO OUTSIDE OF FRAME	OUTSIDE FACE OF POST TO OUTSIDE FACE OF POST
10'-0"	16'-10"	6'-6"
11'-0"	18'-10"	7'-6"
12'-0"	19'-10"	7'-6"
13'-0"	20'-10"	7'-6"
14'-0"	21'-10"	7'-6"
15'-0"	25'-4"	10'-0"
16'-0"	26'-4"	10'-0"
17'-0"	27'-4"	10'-0"
18'-0"	28'-4"	10'-0"
19'-0"	29'-4"	10'-0"
20'-0"	30'-4"	10'-0"
21'-0"	31'-4"	10'-0"
22'-0"	32'-4"	10'-0"
23'-0"	35'-4"	12'-0"
24'-0"	36'-4"	12'-0"
25'-0"	37'-4"	12'-0"
26'-0"	38'-4"	12'-0"
27'-0"	39'-4"	12'-0"
28'-0"	40'-4"	12'-0"
29'-0"	41'-4"	12'-0"
30'-0"	42'-4"	12'-0"

NOMINAL HEIGHT (H)
6 + 1 = 7'-0"
7 + 1 = 8'-0"
8 + 1 = 9'-0"

- NOTES:**
1. SPECIFICATIONS SHOWN CAN BE CHANGED BY THE MANUFACTURER ONLY.
  2. ALL COMPONENTS OF THE PANEL TO BE MILL FINISH (UNCOATED)
  3. OUTSIDE LOOKING IN, GATE LATCHES ON RIGHT
  4. GATE WILL BE HUNG ON THE INSIDE OF THE FENCE LINE
  5. HEIGHT IS FROM GRADE TO TOP OF GATE. ACTUAL HEIGHT IS 3" LESS.
  6. BARB WIRE ARMS ARE 1'-0" HIGHER THAN THE GATE HEIGHT
  7. FOR GATES 8' OR HIGHER, THE BARB WIRE ARMS WILL BE BOLTED TO THE GATE. ALL HARDWARE WILL BE SUPPLIED.
  8. FOOTING & POSTS AS REQUIRED BY SITE CONDITIONS & CODES

COPYRIGHT © MERCHANTS METALS  
ALL RIGHTS RESERVED

**Merchants Metals**  
the first name in fence solutions

SECURE TRAC CANTILEVER SLIDE GATE  
CHAINLINK w/ BARB WIRE

STANDARD GATE DESIGN FOR 10'-30' OPENINGS

BY: JR

DATE: 4.4.14

REV:

DWG. NO.  
CLST10-30wBW

SCALE:  
AS NOTED