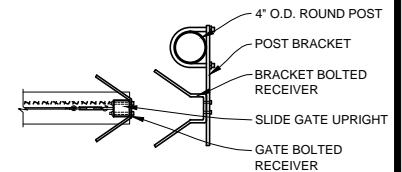


OPENING	OVERALL LENGTH	COUNTERBALANCE
INSIDE FACE OF POST TO INSIDE FACE OF POST	OUTSIDE OF FRAME TO OUTSIDE OF FRAME	OUTSIDE FACE OF POST TO OUTSIDE FACE OF POST
31'-0"	47'-4"	16'-0"
32'-0"	48'-4"	16'-0"
33'-0"	49'-4"	16'-0"
34'-0"	50'-4"	16'-0"
35'-0"	51'-4"	16'-0"
36'-0"	52'-4"	16'-0"
37'-0"	53'-4"	16'-0"
38'-0"	54'-4"	16'-0"
39'-0"	55'-4"	16'-0"
40'-0"	56'-4"	16'-0"

NOMINAL HEIGHT (H)
6 + 1 = 7'-0"
7 + 1 = 8'-0"
8 + 1 = 9'-0"

**NOTES:**

1. SPECIFICATIONS SHOWN CAN BE CHANGED BY THE MANUFACTURER ONLY.
2. ALL COMPONENTS OF THE PANEL TO BE MILL FINISH (UNCOATED)
3. OUTSIDE LOOKING IN, GATE LATCHES ON RIGHT
4. HEIGHT IS FROM GRADE TO TOP OF GATE. ACTUAL HEIGHT IS 3" LESS.
5. BARB WIRE ARMS ARE 1'-0" HIGHER THAN THE GATE HEIGHT
6. FOR GATES 8' OR HIGHER, THE BARB WIRE ARMS WILL BE BOLTED TO THE GATE. ALL HARDWARE WILL BE SUPPLIED.
7. FOOTING & POSTS AS REQUIRED BY SITE CONDITIONS & CODES



COPYRIGHT © MERCHANTS METALS  
ALL RIGHTS RESERVED

**Merchants Metals**®  
the first name in fence solutions

SECURE TRAC CANTILEVER SLIDE GATE  
CHAINLINK w/ BARB WIRE

---

STANDARD GATE DESIGN FOR 31'-40' OPENINGS

BY: JR

DATE: 4.4.14

REV:

DWG. NO. CLST31-40wBW

SCALE: AS NOTED