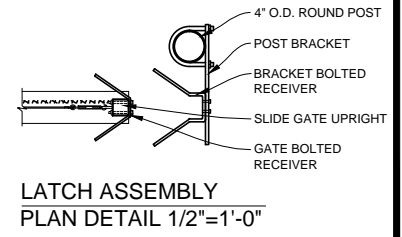


OPENING	OVERALL LENGTH	COUNTERBALANCE
INSIDE FACE OF POST TO INSIDE FACE OF POST	OUTSIDE OF FRAME TO OUTSIDE OF FRAME	OUTSIDE FACE OF POST TO OUTSIDE FACE OF POST
31'-0"	47'-4"	16'-0"
32'-0"	48'-4"	16'-0"
33'-0"	49'-4"	16'-0"
34'-0"	50'-4"	16'-0"
35'-0"	51'-4"	16'-0"
36'-0"	52'-4"	16'-0"
37'-0"	53'-4"	16'-0"
38'-0"	54'-4"	16'-0"
39'-0"	55'-4"	16'-0"
40'-0"	56'-4"	16'-0"

- NOTES:**
- SPECIFICATIONS SHOWN CAN BE CHANGED BY THE MANUFACTURER ONLY.
  - ALL COMPONENTS OF THE PANEL TO BE MILL FINISH (UNCOATED)
  - OUTSIDE LOOKING IN, GATE LATCHES ON RIGHT
  - HEIGHT IS FROM GRADE TO TOP OF GATE. ACTUAL HEIGHT IS 3" LESS.
  - BARB WIRE ARMS ARE 1'-0" HIGHER THAN THE GATE HEIGHT
  - FOR GATES 8' OR HIGHER, THE BARB WIRE ARMS WILL BE BOLTED TO THE GATE.
  - ALL HARDWARE WILL BE SUPPLIED.
  - FOOTING & POSTS AS REQUIRED BY SITE CONDITIONS & CODES



**Merchants Metals**  
the first name in fence solutions

**SECURE TRAC CANTILEVER SLIDE GATE**  
CHAINLINK w/ BARB WIRE

STANDARD GATE DESIGN FOR 31'- 40' OPENINGS

BY: DDD  
DATE: 5.14.14  
REV:

DWG. NO. STCL31-40wBW  
SCALE: AS NOTED