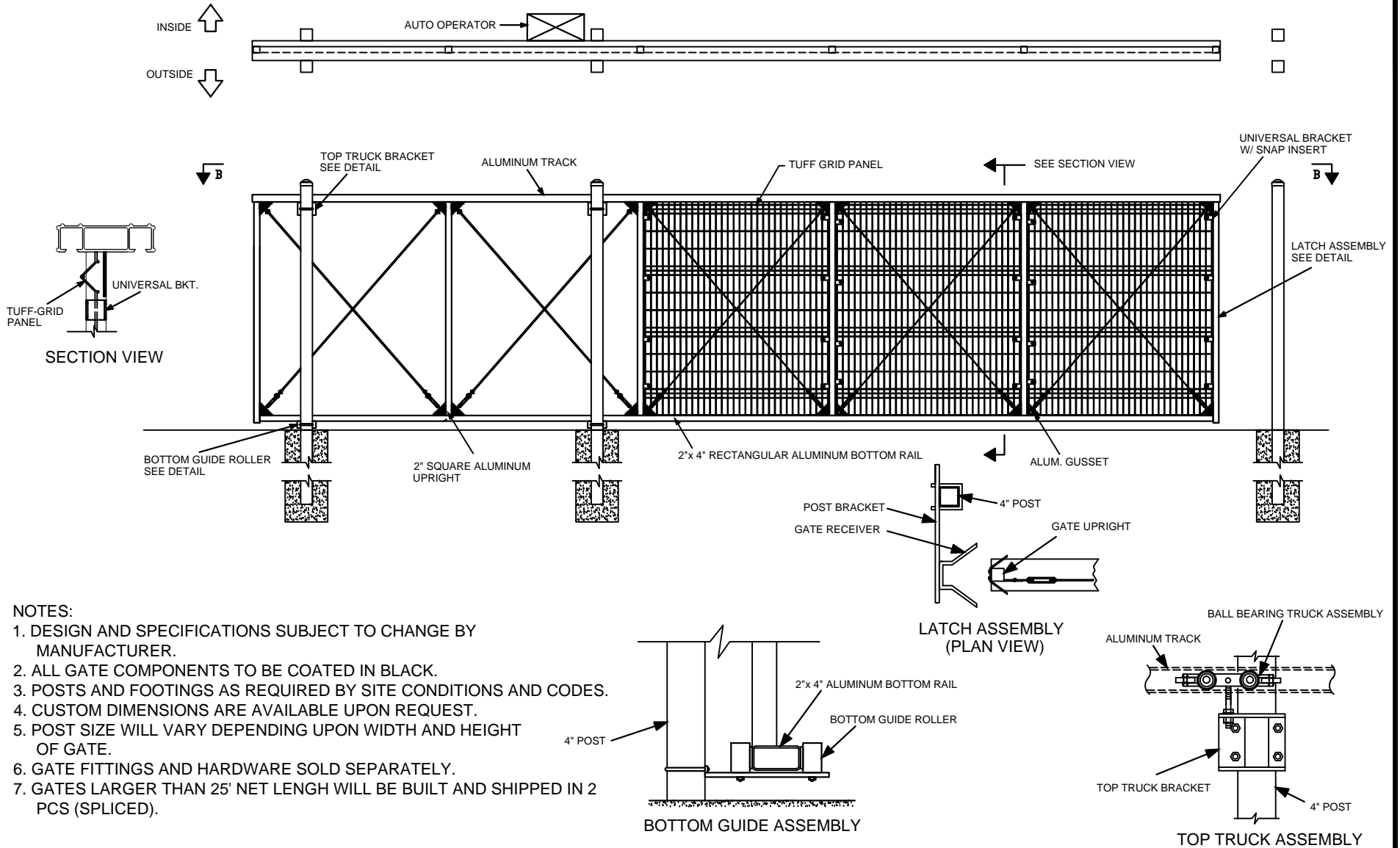


DETAIL B
GATE PLAN VIEW



NOTES:

1. DESIGN AND SPECIFICATIONS SUBJECT TO CHANGE BY MANUFACTURER.
2. ALL GATE COMPONENTS TO BE COATED IN BLACK.
3. POSTS AND FOOTINGS AS REQUIRED BY SITE CONDITIONS AND CODES.
4. CUSTOM DIMENSIONS ARE AVAILABLE UPON REQUEST.
5. POST SIZE WILL VARY DEPENDING UPON WIDTH AND HEIGHT OF GATE.
6. GATE FITTINGS AND HARDWARE SOLD SEPARATELY.
7. GATES LARGER THAN 25' NET LENGTH WILL BE BUILT AND SHIPPED IN 2 PCS (SPliced).



COPYRIGHT © MERCHANTS METALS
ALL RIGHTS RESERVED

Merchants Metals
the first name in fence solutions

TUF-GRID® CANTILEVER GATE

6' TO 8' HIGH x 10' TO 25' WIDE OPENING
(Nom. Dimension)

BY: DCB

DATE: 26 SEPTEMBER 13

REV: ---

DWG: TG.STC

TG CG 6GA 2B-5B 4'-8" HX 10'-25' W

SCALE:

AS NOTED